



التكافل الإجتماعي لمسلمي كانسس سيتي KANSAS CITY MUSLIMS SOCIAL SOLIDARITY

Mission Statement: Community member to live in the warranty of the group, and the group to continually assist needy individuals, where all cooperate and join forces in creating better and growing community, and pushing the harm from individuals.

Social Solidarity refers to the integration, and degree and type of integration, shown by a community members. It refers to the ties in a society - social relations - that bind people to one another. It is based around kinship and shared values where community members cooperate between them in effective ways, whether individuals or groups, on undertaking positive situations as of the care of orphans, sick people, widows, and other services, in propelling from deep feeling originated from the Islamic faith.



التكافل الإجتماعي:

أن يتضامن أبناء المجتمع ويتساندوا فيما بينهم سواء أكانوا أفراداً أو جماعات على اتخاذ مواقف إيجابية كرعاية الأيتام، والمرضى، والأرامل، وغير ذلك، بدافع من شعور وجداني عميق ينبع من أصل العقيدة الإسلامية، ليعيش الفرد في كفالة الجماعة، وتعيش الجماعة بموازرة الفرد، حيث يتعاون الجميع ويتضامنون لإيجاد المجتمع الأفضل، ودفع الضرر عن الأفراد.

Join ICK Group @ http://www.ickansas.org/ick_group.html

Type of Supports:

- 1) Moral
- 2) Knowledge
- 3) Financial
- 4) Logistics
- 5) Volunteering Work
- 6) Community Services

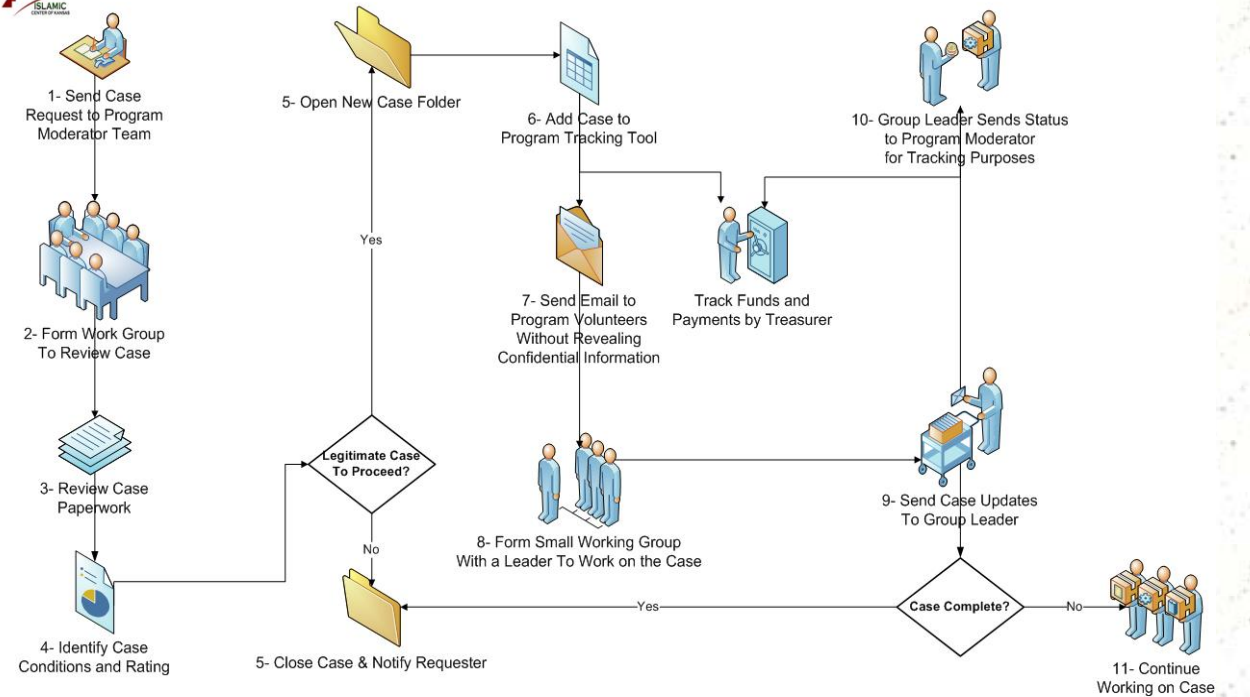
بِسْمِ اللَّهِ الرَّحْمَنِ الرَّحِيمِ

وَقُلِ أَعْمَلُوا فَسَيَرَى اللَّهُ عَمَلَكُمْ وَرَسُولُهُ وَالْمُؤْمِنُونَ وَسَتُرَدُّونَ إِلَىٰ عِلْمِ الْغَيْبِ وَالشَّهَادَةِ فَيُنبِّئُكُمْ بِمَا كُنْتُمْ تَعْمَلُونَ

And say (unto them): Act! Allah will behold your actions, and (so will) His messenger and the believers, and ye will be brought back to the Knower of the Invisible and the Visible, and He will tell you what ye used to do. (105)



KC MUSLIMS SOCIAL SOLIDARITY PROGRAM - WORK FLOW DIAGRAM



<http://www.ickansas.org>